

# Pisikene pai

Külli Erimäe

The musical notation is written on a single staff in 2/4 time. It begins with a treble clef. The melody consists of the following notes: a quarter note C4, a quarter note E4, a quarter note G4, a quarter note A4, a quarter note B4, a quarter note C5, a quarter note B4, a quarter note A4, a quarter note G4, a quarter note E4, and a quarter note C4. The lyrics are: "Pai, pai, pi-si-ke-ne pai, mi-nu peos on väi-ke pai." Above the staff, there are four chord boxes: "C" above the first note, "C" above the second note, "1. G7" above the third note, and "C" above the final note. The piece ends with a double bar line and repeat dots.

Pai, pai, pi-si-ke-ne pai, mi-nu peos on väi-ke pai.



# Pisikeste jäneste tants

Küllli Erimäe



Hüp - pab, hüp - pab hops - hops - hops pi - si - ke - ne



jän - ku - laps. Jän - ku - tant - su tant - sib ta,  
Kaa - sa tant - sin mi - na ka,

A7 D



# Vahva jänkulaps

Külli Erimäe

F B♭ F/A B♭ C7 F

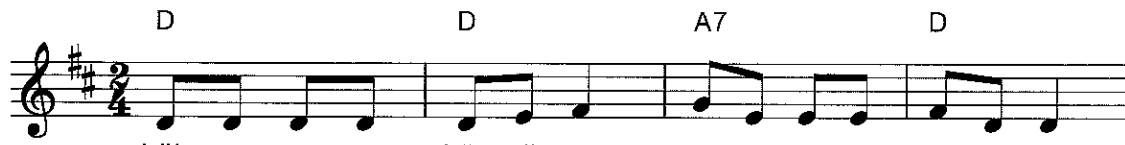
1. Mul on pi - kad kõr - vad,      peh-me sa-ba-ots.  
2. Hüp-pan rõõm-salt õu - es      ik - ka hips ja hops.

<sup>3</sup> F B♭ F/A C7

1.2. Mi - na o - len väi - ke      vah - va jän - ku - laps.

## Lähme metsa kõndima

Küllli Erimäe



Läh-me met-sa kõn-di-ma, ilm on i-lus, tu-ju hea.

Läh-me met-sa kõn-di-ma, vas-tu tu-leb jän-ku-ke.  
ka-ru-ke.  
re-ba-ne.  
põd-ra-ke.

# Olen väike laululind

Külli Erimäe

E $\flat$  E $\flat$  B $\flat$  E $\flat$

Refr. O-len väi-ke lau-lu-lind, muu-si-ka teeb rõõm-saksmind.

5 Fm7 B $\flat$  E $\flat$  A $\flat$

1. Lau-lan o-ma em-me-le, lau-lan o-ma is-si-le.